

MX-1 About the USB Audio Ports

USB Audio Ports and the Mixer Mode

The MX-1 provides 18 IN/18 OUT USB audio ports, enabling it to meet the needs of various computer-based and DAW performance setups. Three mixer modes are provided, allowing you to select the type of operation that's appropriate for your needs.

The Mixer Mode and Performance

The various mixer modes are respectively suitable for the following situations.

* For details on how to change the mixer mode, refer to "Settings" in the owner's manual.

Mixer modes	Performance
MIXER	Mixing the sound of AIRA products or other hardware.
CONTROL SURFACE	Use as a DAW controller.
EXTERNAL MIXING	Mixing the DAW playback.

The Mixer Mode and the Input/Output Ports

The audio routing of the input/output ports changes depending on the selected mixer mode, as follows.

Input port (Input from the MX-1 to the computer)

Input port name	Mixer modes		
	MIXER	CONTROL SURFACE	EXTERNAL MIXING
1-2	The sound that is input to the DAW or computer reflects the effects and settings except for PAN, LEVEL faders, and MUTE buttons.	The sound that is input to the DAW or computer reflects only the GAIN settings.	The sound that is input to the DAW or computer reflects only the GAIN settings.
3-4			
5-6			
DIGITAL			
USB1			
USB2			
USB3			
USB4			
MIX (*1)			

*1

The sound that is heard from the MIX OUT (L/MONO, R) jacks (the sound of the total mix) is sent from MIX.

Output port (Input from the computer to the MX-1)

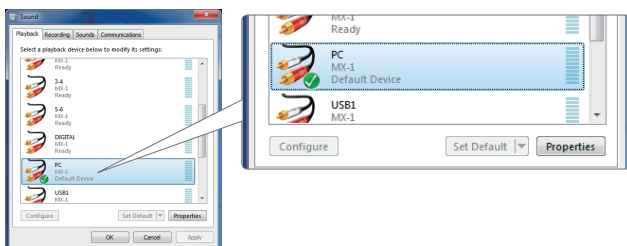
Output port name	Mixer modes			
	MIXER		CONTROL SURFACE	EXTERNAL MIXING
1-2	The output from the DAW or computer is ignored; the sound of each input jack is output.		The output from the DAW or computer is ignored; the sound of each input jack is output.	The sound that is output from the DAW or computer reflects the effects and settings other than GAIN.
3-4				
5-6				
DIGITAL	"If devices are connected to the DIGITAL jack or USB 1–4"	"If devices are not connected to the DIGITAL jack or USB 1–4"		
USB1	The output from the DAW or computer is ignored; the sound of each input jack is output.	The sound that is output from the DAW or computer reflects all of the settings and effects.		
USB2				
USB3				
USB4				
PC	The sound that is output from the DAW or computer reflects all of the settings and effects.		The sound that is output from the DAW or computer reflects the MASTER LEVEL and MASTERING FX settings.	

Output settings on the computer

If you're using MX-1 as the playback device on a Windows or Mac computer, make the following settings.

● Windows

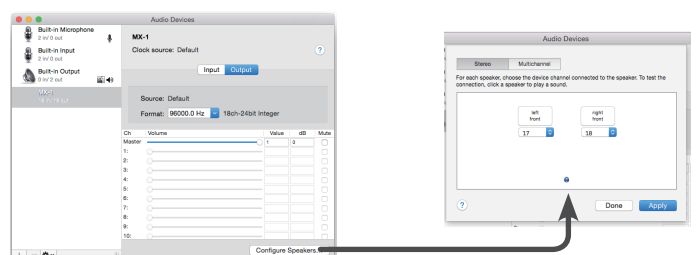
1. On the "Start" menu, choose "Control Panel."
2. Click "Sound."
3. Click the "Playback" tab, and choose "PC."



4. Click the [OK] button.
This completes the settings.

● Mac

1. Open [Applications] -> [Utilities] -> [Audio MIDI Settings].
2. In the list of devices at the left side of the screen, choose "MX-1" and then click the "Output" tab.
3. Click the [Configure Speakers...] button.
4. Click the [Stereo] tab, then specify 17 for the left and 18 for the right.



5. Click the [Apply] button.
This completes the settings.